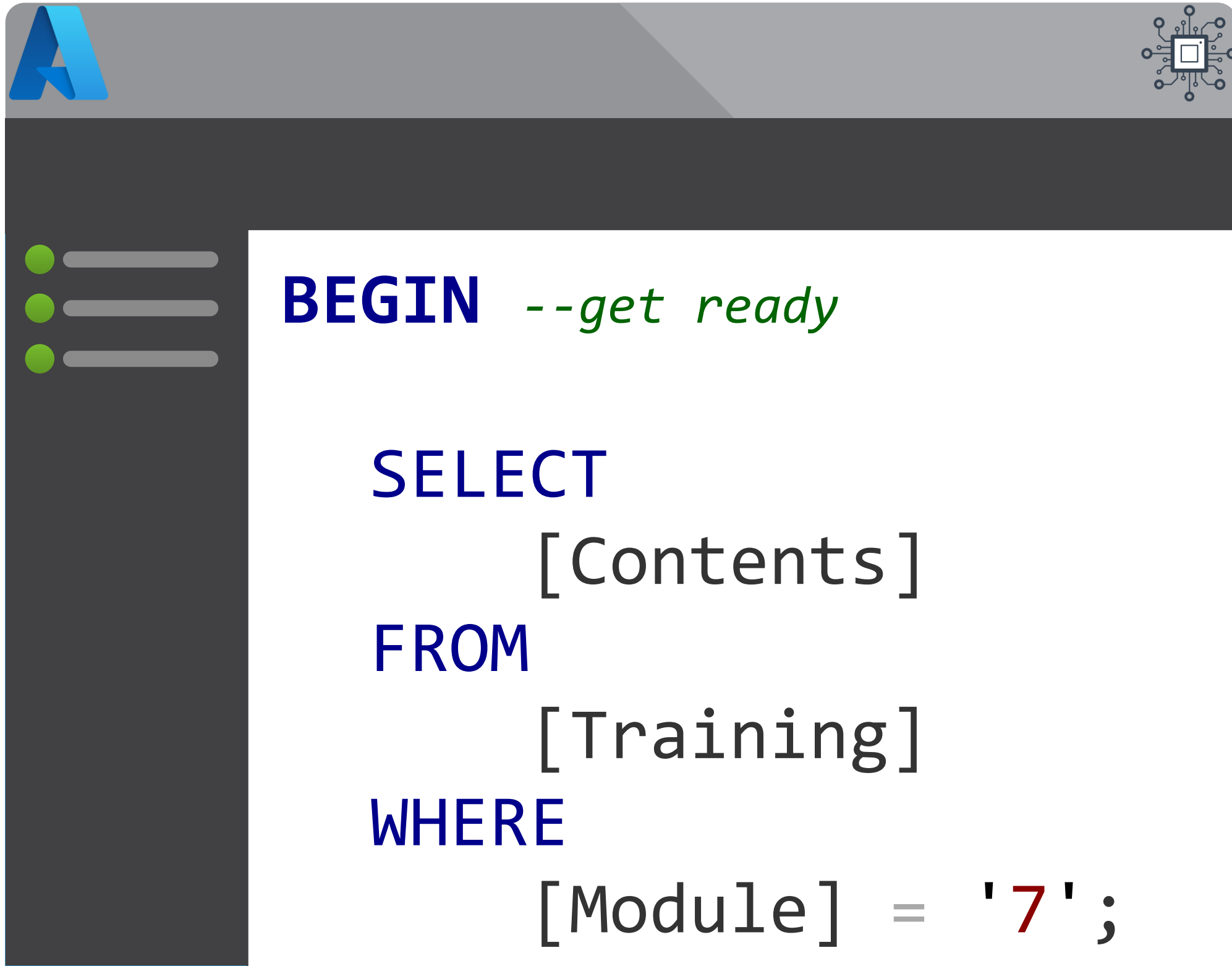


Module 7

VNet Integration



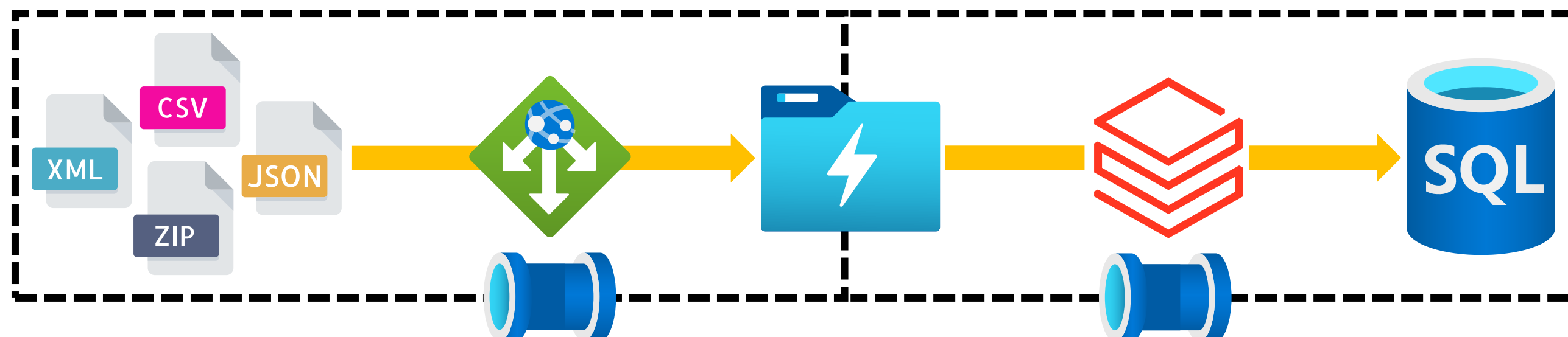
- Managed VNet's
- Private Endpoints
- Firewall Bypass



Integration Pipelines as Data Engineers



Control Flow



1

Linked Services



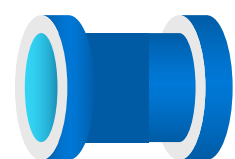
2

Datasets



3

Activities



4

Pipelines



5

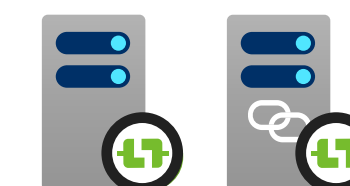
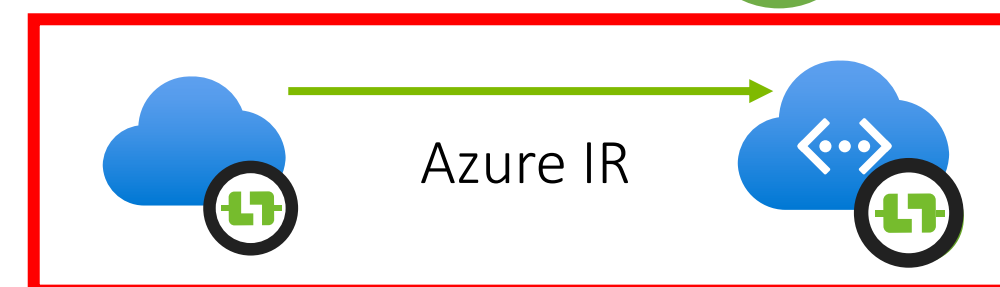
Triggers



Add dynamic content [Alt+P]

Integration Runtimes

6



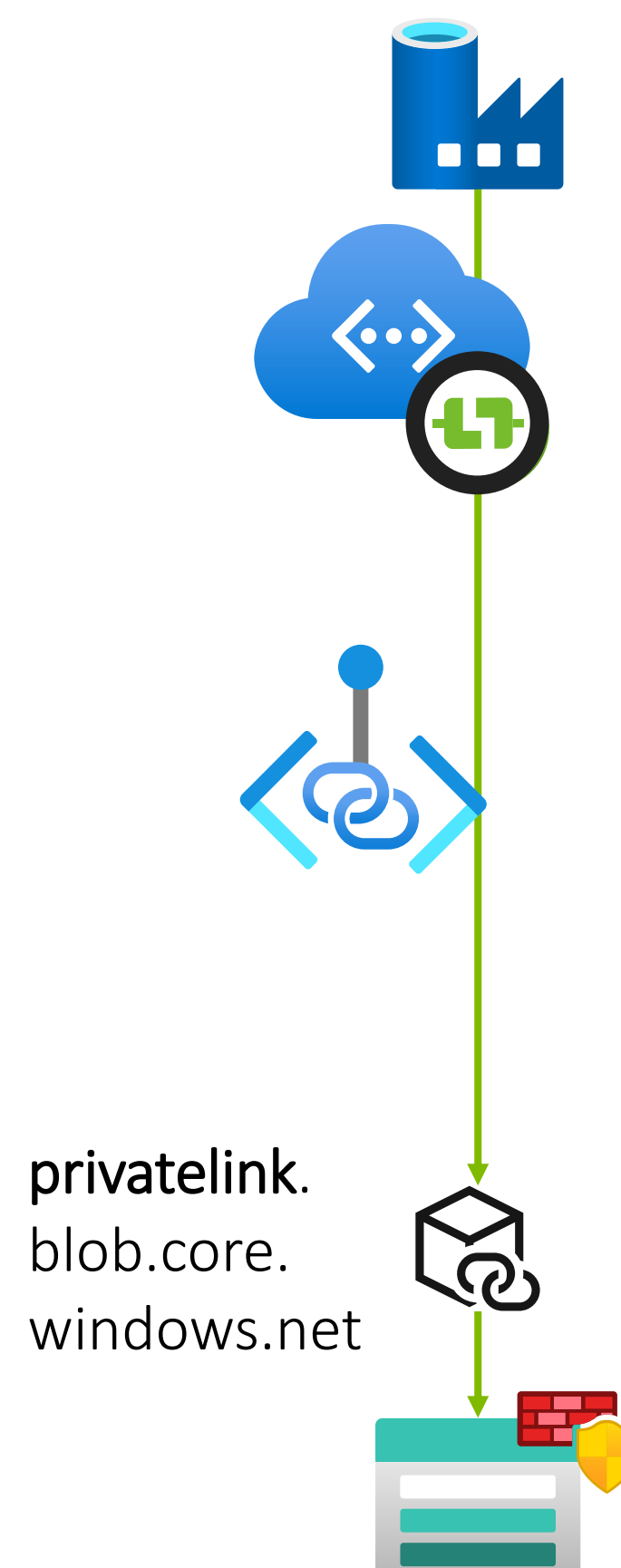
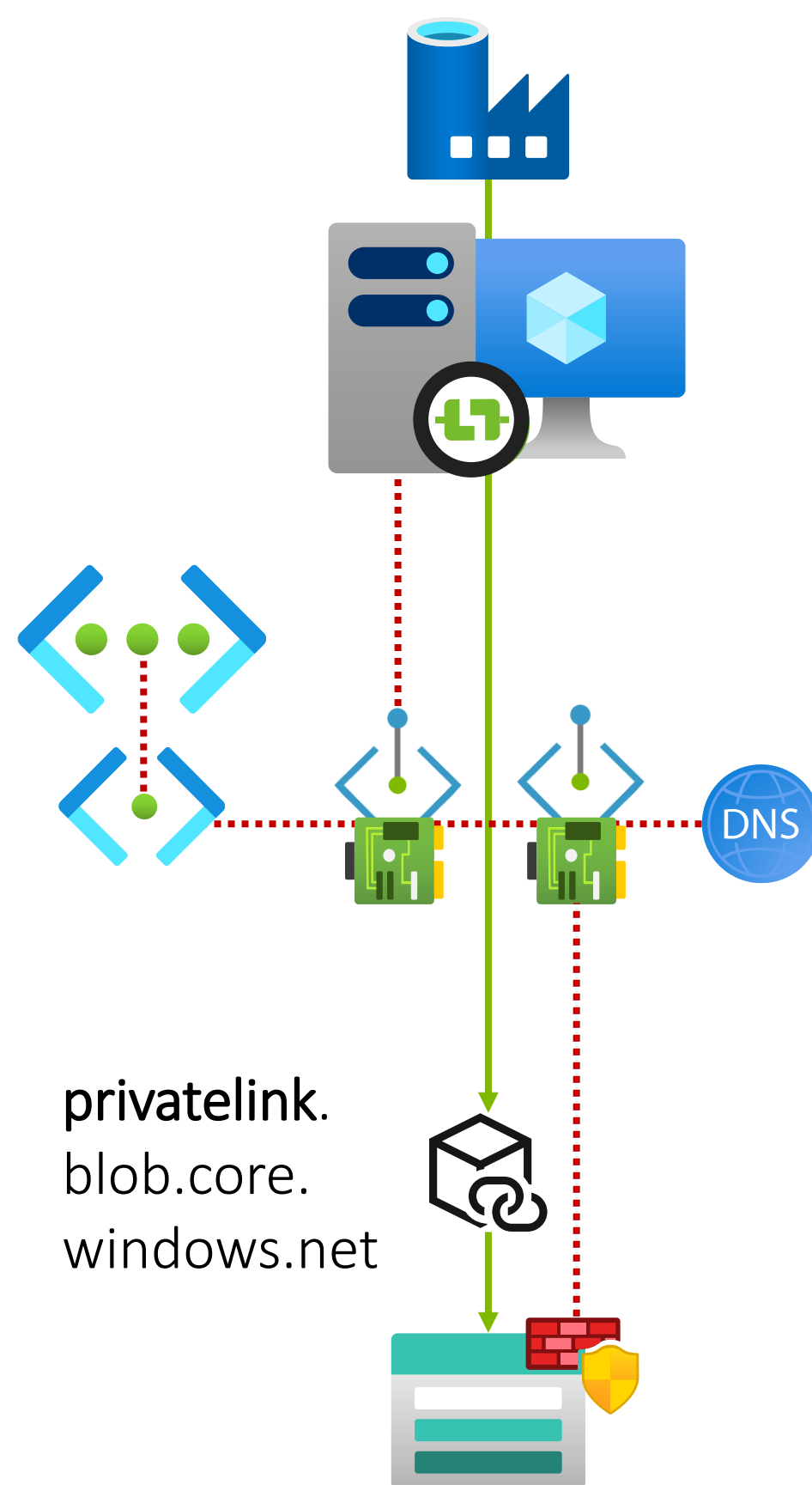
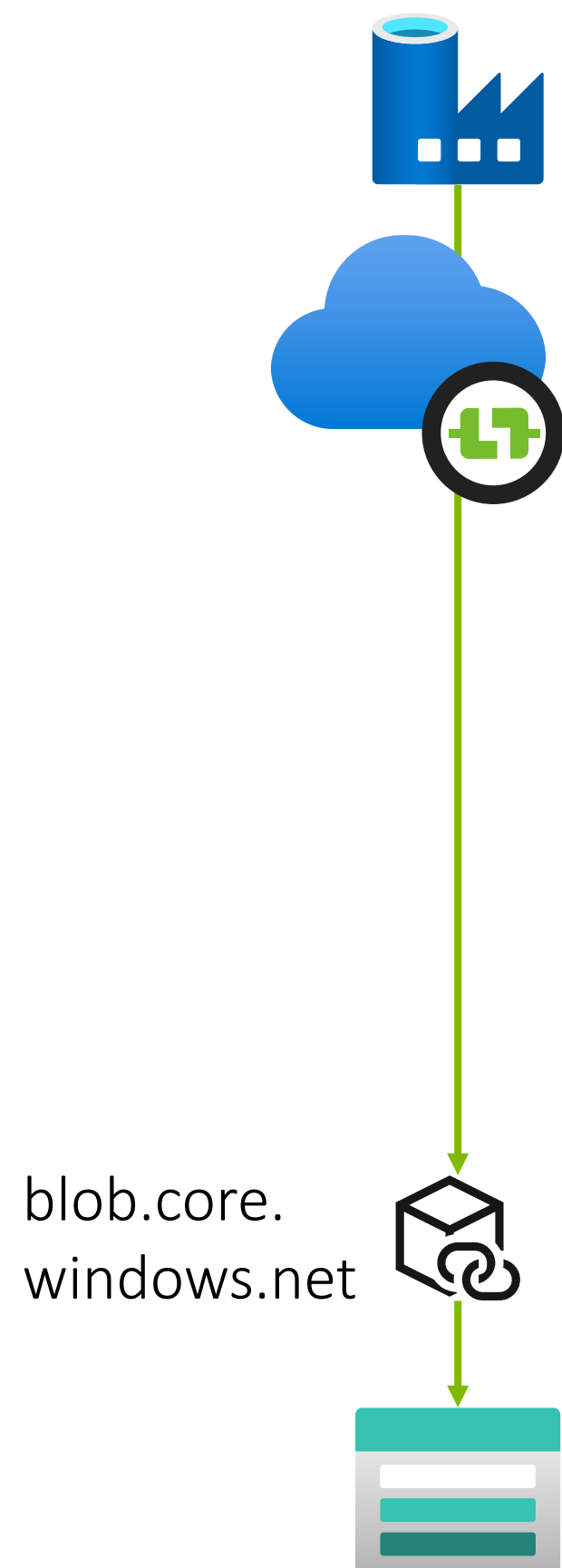
Hosted IR



SSIS IR

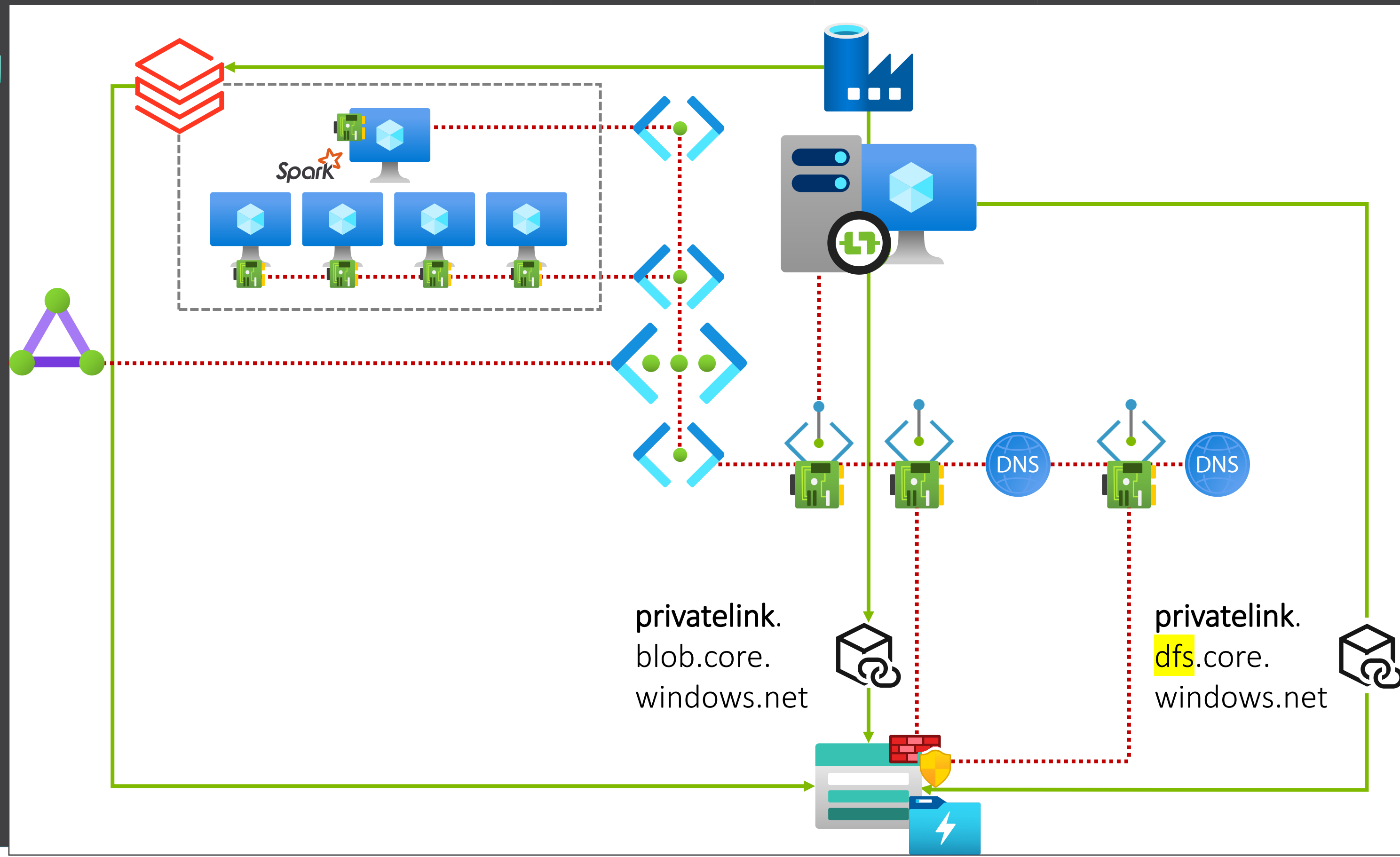


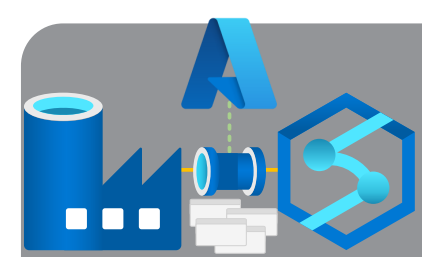
Managed vs Unmanaged Connections



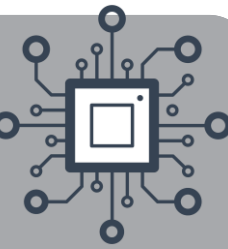


Further VNet Connections

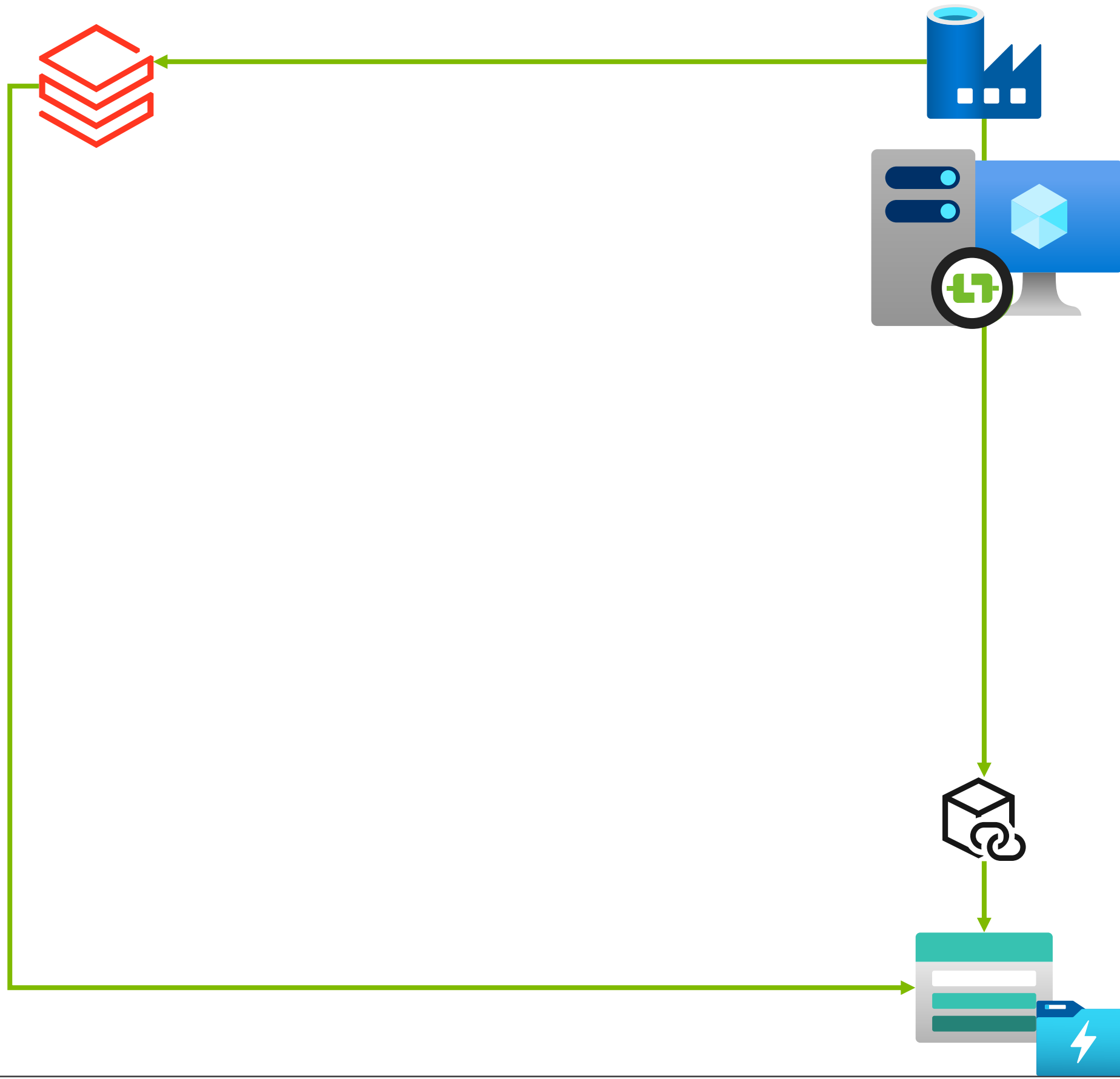




Further ~~V~~Net Connections

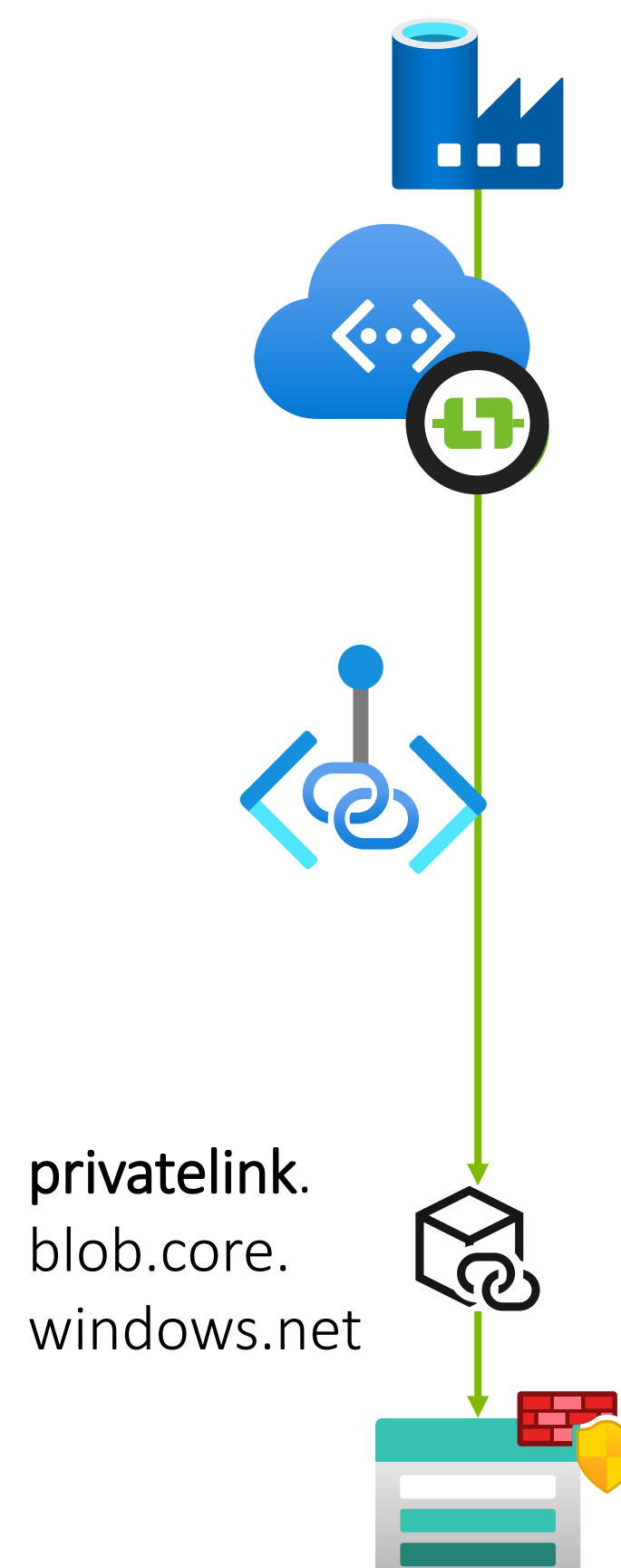
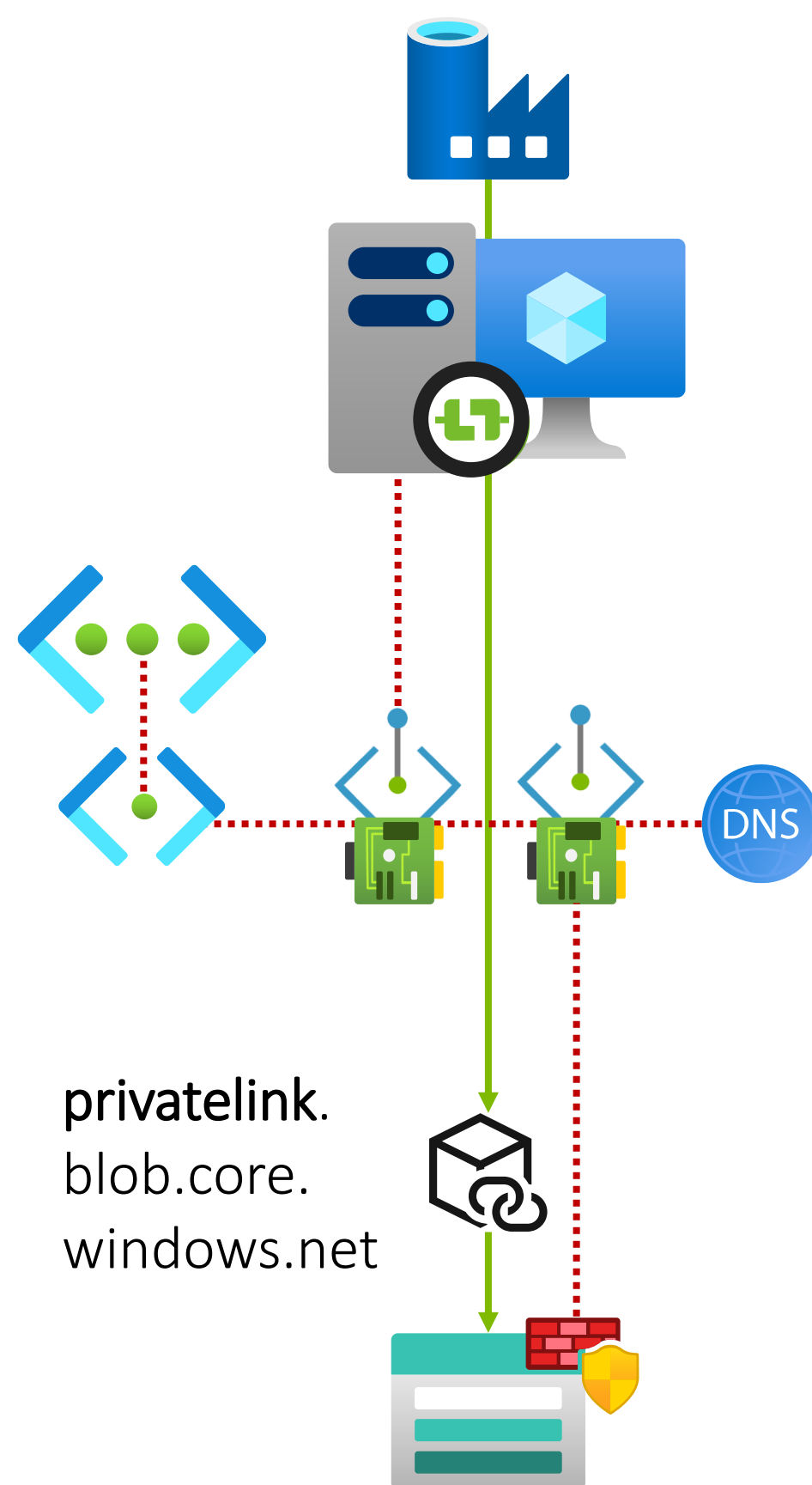
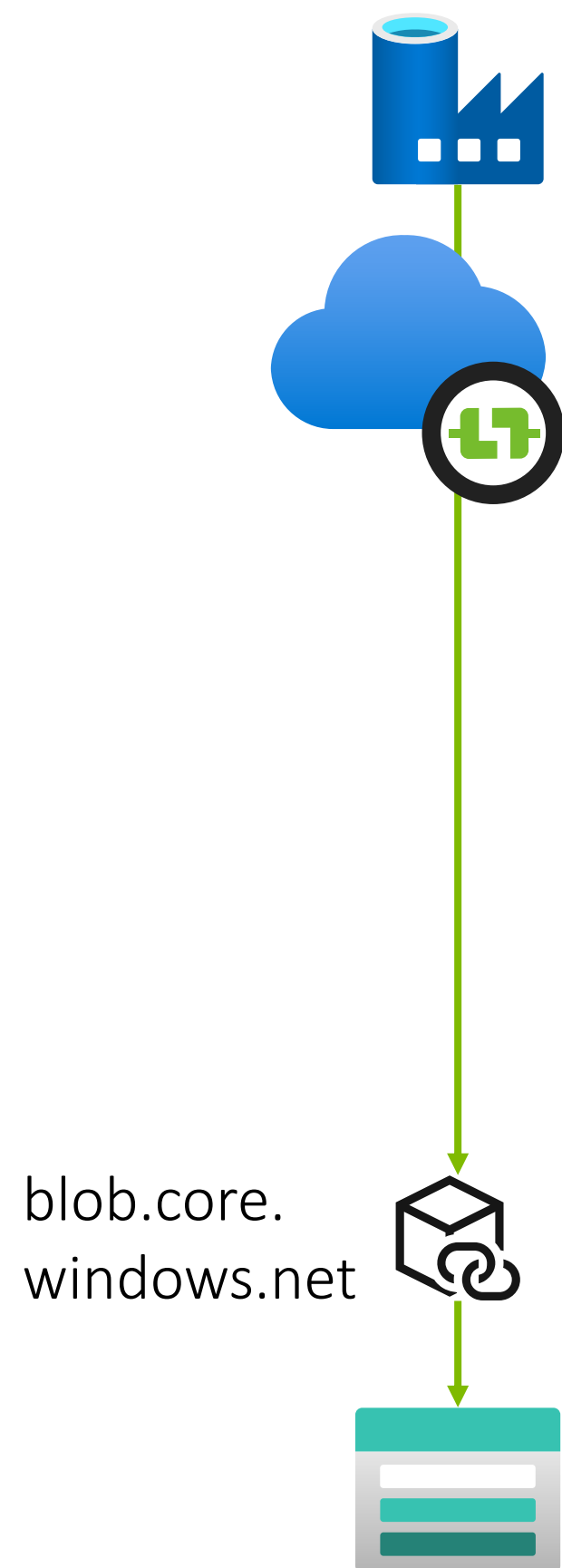
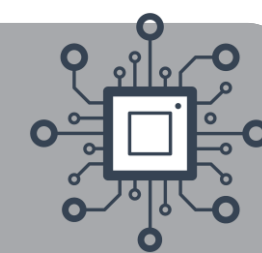


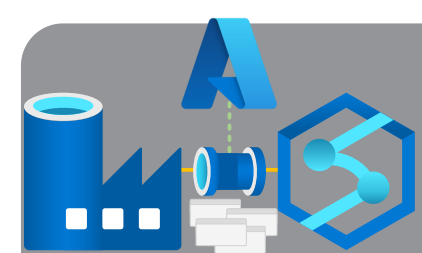
For a Data Engineer



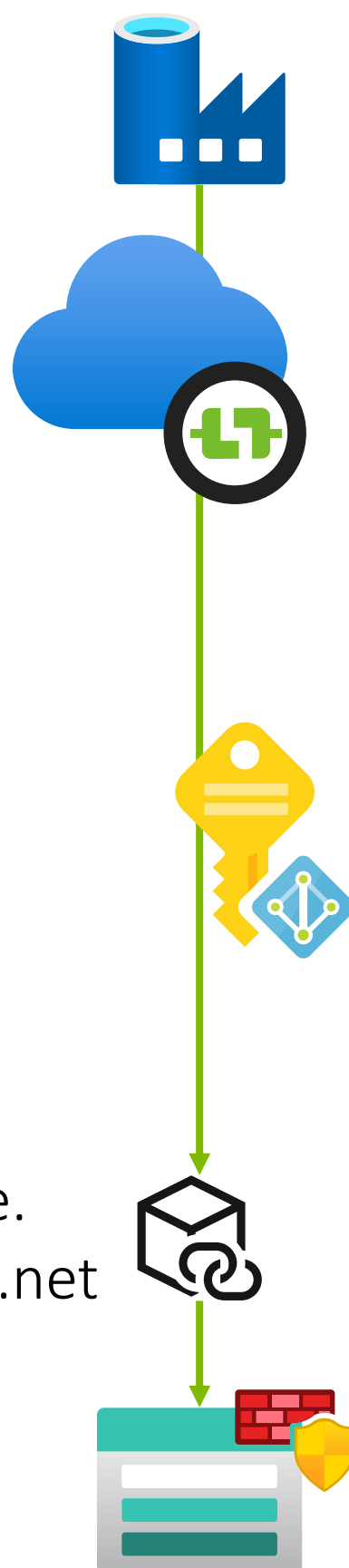
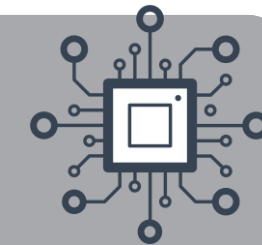


Managed vs Unmanaged Connections





Public Connections

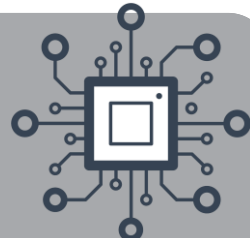


Managed
Identity

** Trusted access based on system-assigned managed identity.*

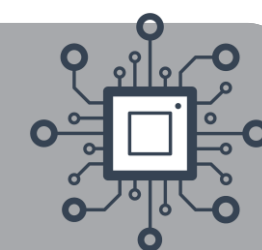
Microsoft.DataFactory/factories

blob.core.
windows.net

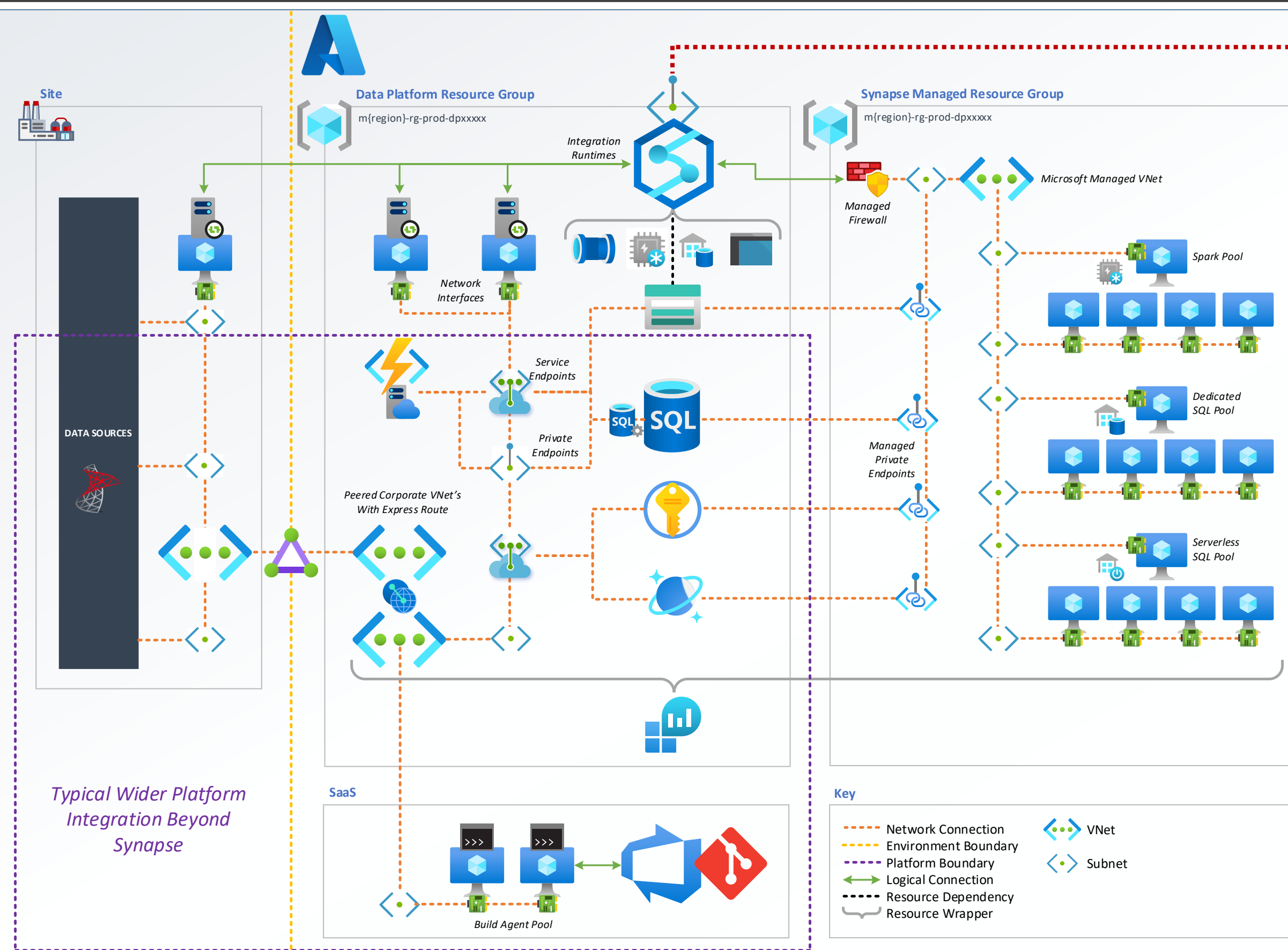




VNet Integration with Synapse

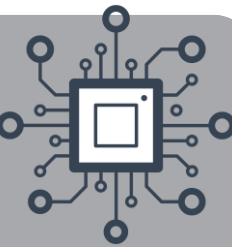


Synapse Analytics – Private Link Hubs



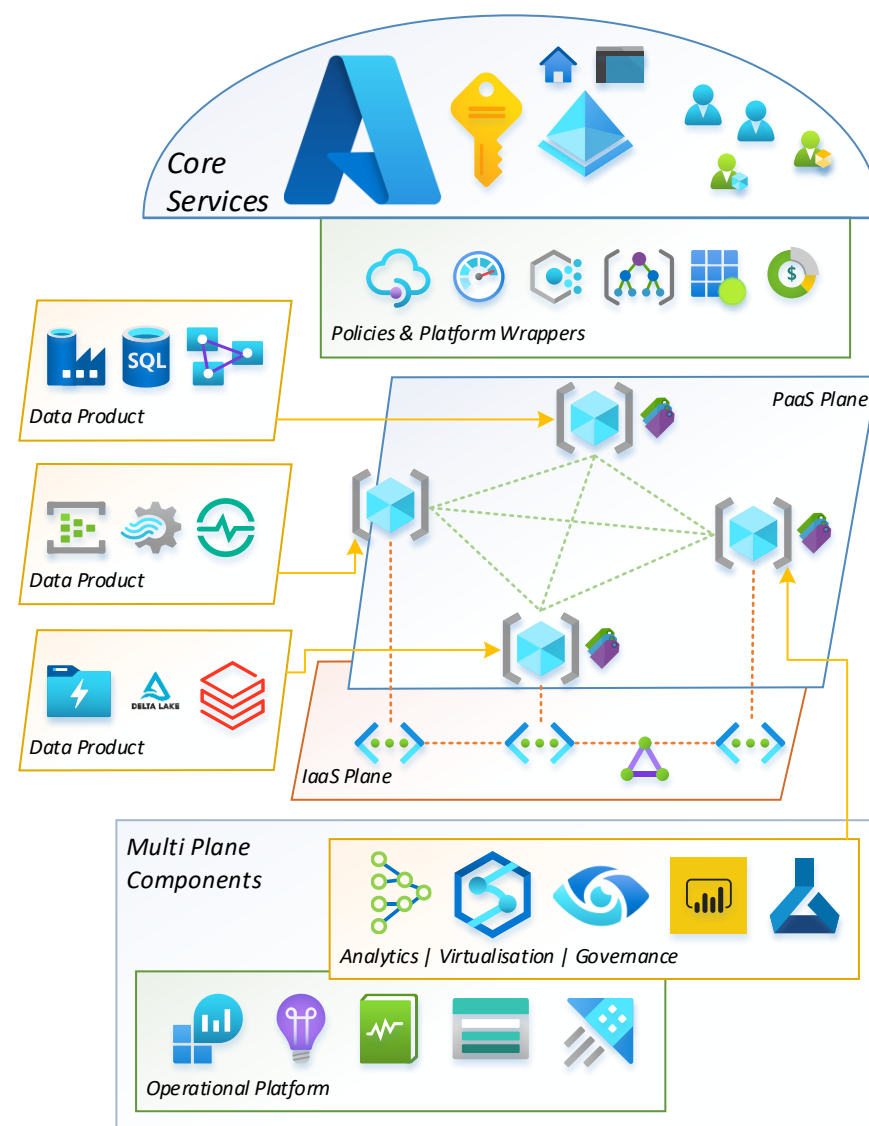


VNet's with a Data Mesh Architecture

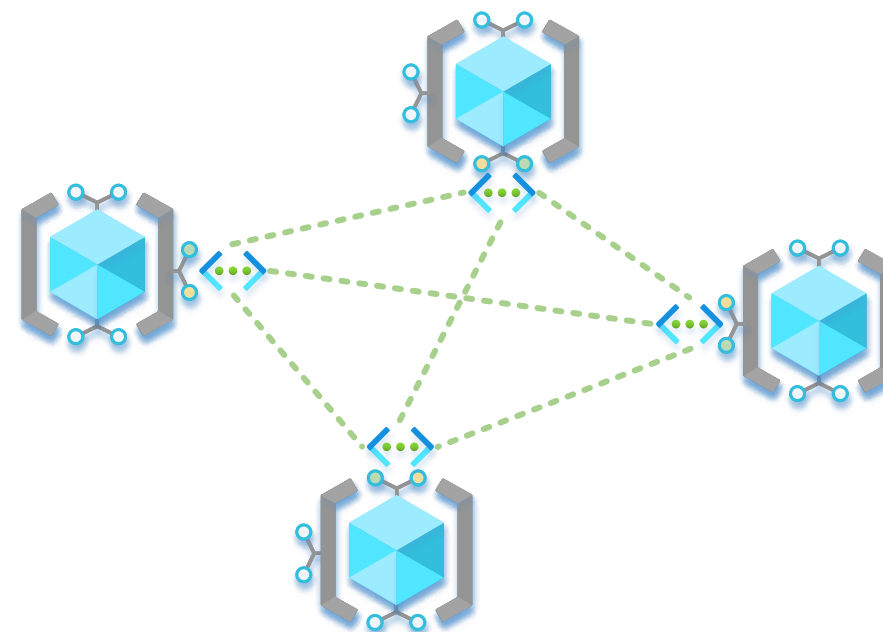


Building a Data Mesh Architecture in Azure

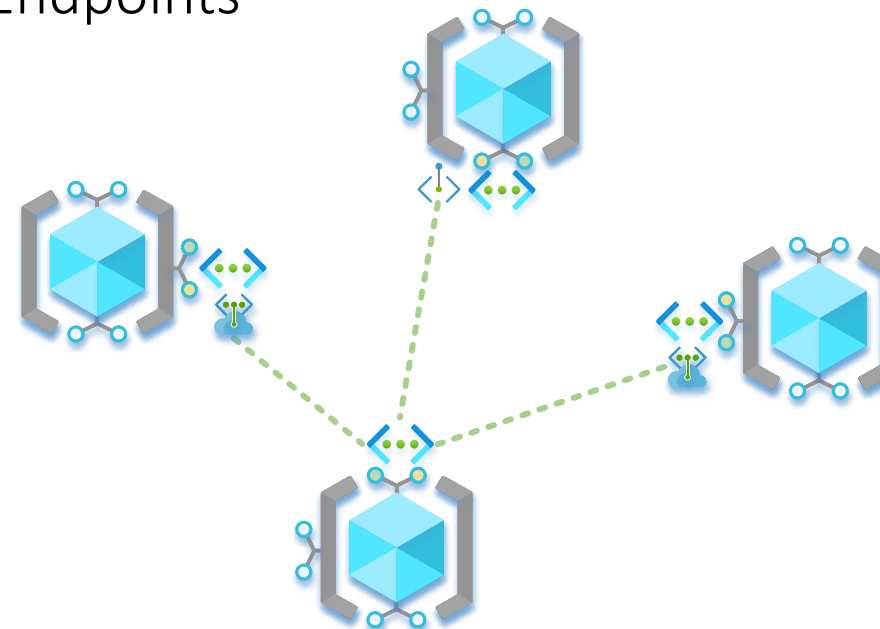
Theory vs Practice



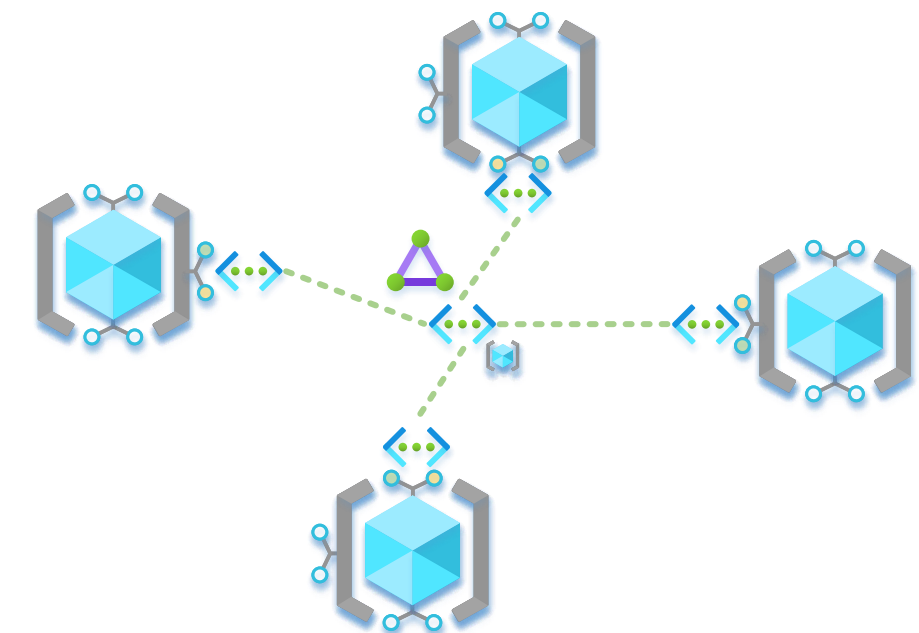
Option 1 – Full VNet Peering



Option 3 – Targeted Service/Private Endpoints

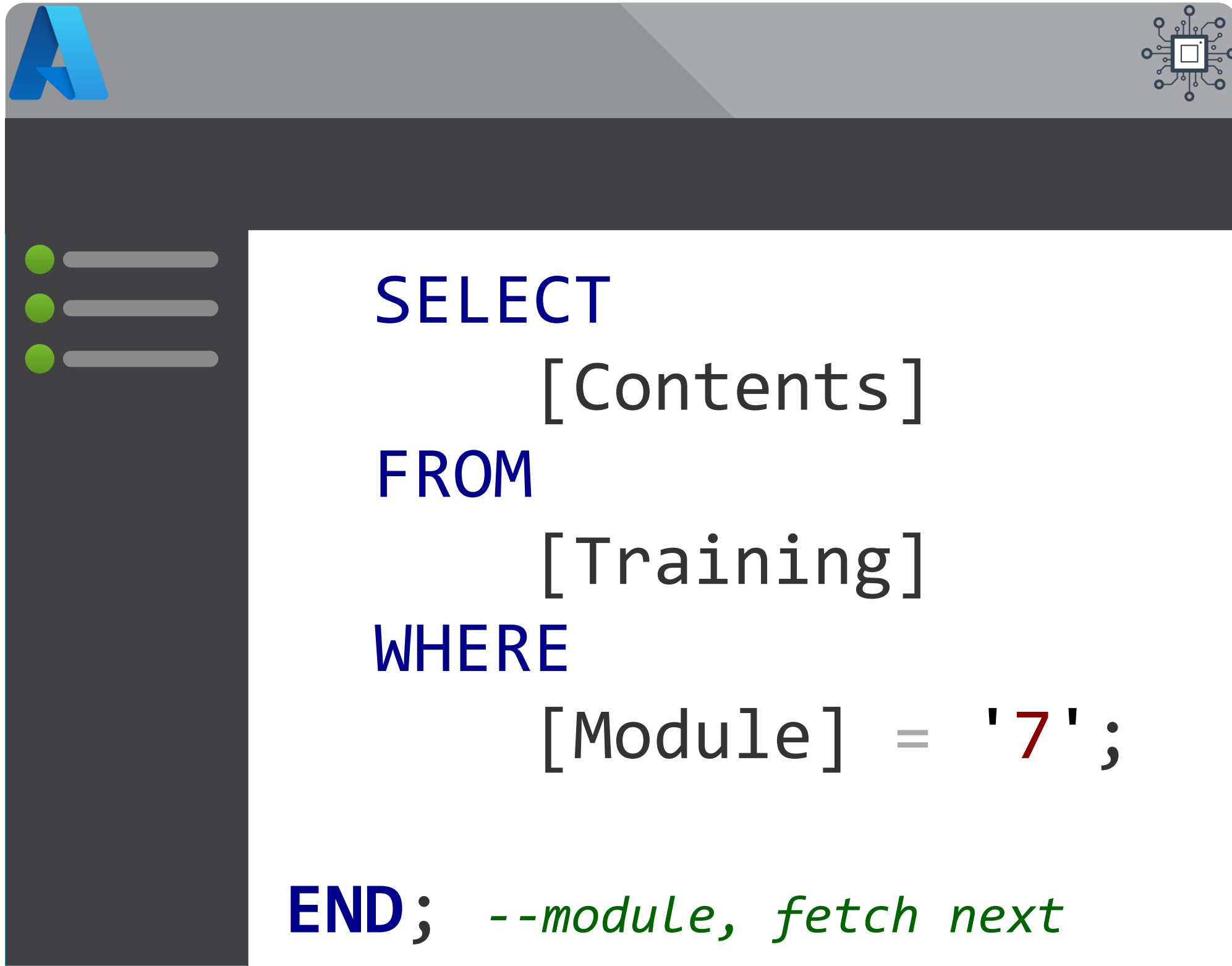


Option 2 – Hub & Spoke VNet Peering



Module 7

VNet Integration



- Managed VNet's
- Private Endpoints
- Firewall Bypass